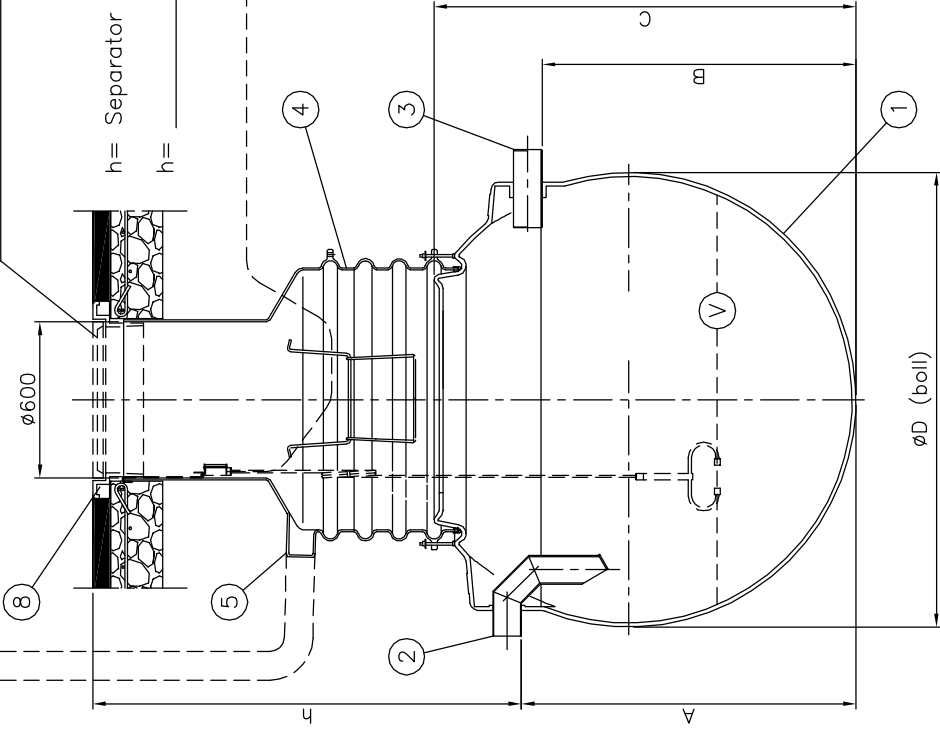


ACCESSORY: Floating adjustable cover ø600	
Cover A15 (1.5 tn)	<input type="checkbox"/>
Cover C250 (25 tn)	<input type="checkbox"/>
Cover D400 (40 tn)	<input type="checkbox"/>
Frame	<input type="checkbox"/>

Det. A – A:



h = Separator connection height from ground (mm)  
h = \_\_\_\_\_ mm

**NOTE!**  
If you make any changes on the drawing, mark (x) in the square  
Changes made on the drawing: \_\_\_\_\_

Inlett/Outlet sewer: Dy \_\_\_\_\_.

EuroHUK 600 h \_\_\_\_\_ - \_\_\_\_\_ maintenance shaft

Note: \_\_\_\_\_

EuroHUK 600 maintenance shaft, material: PEMD			
h = Separator connection height from ground (mm)			
EuroHUK 600 h 9–13 (x)	<input type="checkbox"/>	h = 900...1300 mm	Weight: 22 kg
EuroHUK 600 h 13–17	<input type="checkbox"/>	h = 1300...1700 mm	Weight: 38 kg
EuroHUK 600 h 17–21	<input type="checkbox"/>	h = 1700...2100 mm	Weight: 56 kg
EuroHUK 600 h 21–25	<input type="checkbox"/>	h = 2100...2500 mm	Weight: 90 kg

EuroHEK OMEGA Sans and Sludge separator		NS	2000	4000	5000
V	Storage volume of Sand and Sludge	l	2000	4000	5000
	Weight (without maintenance shaft)	kg	150	230	280
D	Ball diameter	mm	1750	2170	2200
C	Height	mm	1650	2100	2250
B	Bottom/Outlet sewer	mm	1200	1650	1750
A	Bottom/Inlet sewer	mm	1280	1730	1820
8	ACCESSORY: Floating adjustable cover ø600				
	A15, C250 or D400 (1.5/25/40 tn)				
7	ACCESSORY: LABCOM Data Transfer Unit	(x)	<input type="checkbox"/>	<input type="checkbox"/>	<input type="checkbox"/>
6	ACCESSORY: SandSET-1000 Sludge alarm unit with SET/S probe	(x)	<input type="checkbox"/>	<input type="checkbox"/>	<input type="checkbox"/>
5	Ventilation outlet (as needed)	PE-MD	Dy110	Dy110	Dy110
4	ACCESSORY: EuroHUK 600 maintenance shaft (as needed)	PE-MD			
3	Outlet sewer (according to the order)	PE-HD		Dy110/160/200	
2	Inlet sewer (according to the order)	PE-HD		Dy110/160/200	
1	Material: PE-MD pH 3–10 / Heat resistance 50°C				
CHOOSE		(x)	<input type="checkbox"/>	<input type="checkbox"/>	<input type="checkbox"/>



Product:

Title:

EuroHEK OMEGA 2000, 4000 and 5000

Design by: TIS/JS

Checked by:

Approved by: JP

Drawing no. 15AB04\_e

Date: 24.10.05

Scale:

Construction site:

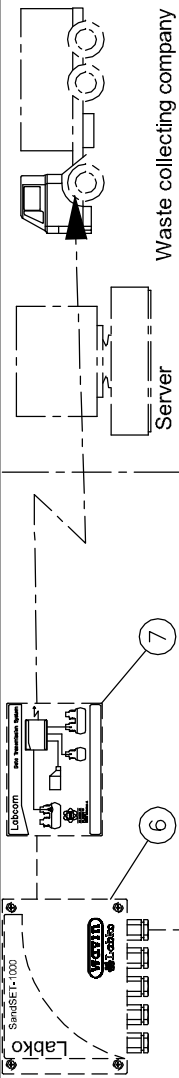
WAVIN-LABKO Ltd.  
Labkote 1  
FIN-36240 KANGASALA  
FINLAND  
Tel. +358-020-1285 200  
Fax +358-020-1285 280



This drawing and the technical information included in the drawing are property of Wavin-Labko Ltd. This drawing can not be shown to a third party without the consent of Wavin-Labko Ltd.

Approved by customer:

\_\_\_\_ / \_\_\_\_ . 200 \_\_\_\_.



Server

Waste collecting company

24.10.2005 14:10:16